

**THEODORE**  
STATE SCHOOL  
*and community*  
**NEWSLETTER**  
***Principal's Piece***

The Boulevard  
PO Box 168  
Theodore 4719  
Phone: (07) 49903333  
Facimile: (07) 49903300  
admin@theodoress.eq.edu.au  
www.theodoress.eq.edu.au

No: 07 -Week 06 Term 2

Wednesday 25th May 2022

Welcome to week six. This week I have had the pleasure of taking the instrumental band students from Theodore and Moura to Biloela for rehearsal and FanFare. The students have been able to meet new friends and be challenged by playing in a large band. Thank you to Mr Evenhuis for all of his work, coordination and patience in organising this event for our students.

This Friday our secondary students will travel to Baralaba for an interschool touch and netball game. The students are really looking forward to this event as they get to mix with other students. Thank you to the secondary students for making this possible.

#### **Dr Caroline Blackley**

Next week Dr Caroline Blackley will be joining us to work with staff providing feedback relating to pedagogy and classroom management. This is the fourth year that Dr Blackley has worked with our school staff. Over this time she has gathered extensive data. This data helps inform the support and direction the school takes in developing our teachers.

#### **Leading Learning Day**

This Thursday I will be heading to Gladstone for a Principals meeting. These days are very informative and a powerful opportunity to network with other school leaders.

#### **Parents and Citizens meeting**

A P&C meeting will be held on the 2 June at 5pm in the Arts Room at the school. Please come along and become a member of the P&C.

#### **Hand Foot and Mouth**

This week there have been a couple of cases of 'Hand, Foot and Mouth' reported. Please ensure your child has their own water bottle and only drinks from that. The school is encouraging hand washing and not sharing items.

#### **Label Clothing**

Please make sure all of your child's clothing is labelled. As the day warms children tend to remove their jumper. We find a lot of lost items and unfortunately most of them are not named. This makes it very difficult to return the item to the owner.

## THEODORE STATE SCHOOL

### ATTENDANCE TERM 2

WEEK	PREP	YR1	YR2	YR3	YR4	YR5	YR6	YR7	YR8	YR9	YR10
WEEK 1	87.5%	89.3%	90.0%	94.6%	93.8%	91.2%	91.3%	96.3%	84.4%	68.8%	75%
WEEK 2	90.8%	87.5%	94.2%	100%	89.3%	95.6%	88.9%	85.0%	75%	81.3%	50%
WEEK 3	88.9%	78.6%	81.1%	90.5%	67.9%	79.4%	92.6%	92.5%	64.9%	75%	50%
WEEK 4	92.0%	90.5%	78.0%	97.1%	76.4%	80%	100%	96.4%	81.3%	93.8%	40%
WEEK 5	83.3%	90.5%	73.4%	96.4%	80.4%	80.9%	90.4%	95.5%	75%	25%	25%

## Regular school attendance

Parents and caregivers must send children to school every school day under Queensland law unless there is an acceptable reason such as:

- illness
- doing work experience
- competing in school sporting events.

If your child is going to be absent from school, you must let the school know why the absence has occurred within two school days of their return. If possible, it is best to advise the school beforehand.

Avoid keeping your child away from school for reasons such as:

- birthdays
- shopping
- visiting family and friends
- if they sleep in
- looking after other children
- minor check ups or care, such as hair cuts.

Routine medical or other health appointments should be made either before or after school or during the school holidays.

Establishing good routines around school can assist with regular school attendance. These include:

- have a set time to go to bed
- have a set time to get out of bed
- have uniform and school bag ready the night before
- have a set time for starting and finishing breakfast
- set a time for daily homework activities
- speak about school positively
- send your child to school every school day including their birthday and the last day of term from Prep.

If you are experiencing difficulty in sending your child to school, contact the school principal for advice and support.

## Every day counts

### MOST STUDENTS ATTEND SCHOOL EVERY DAY

It's important that children are at school all day, every day 📖📖📖📖



OK reasons to stay home from school



sick



natural disasters



It's **NOT OK** to skip school to shop, sleep in, finish an assignment, go on holidays

### EVERY DAY AT SCHOOL COUNTS

Missing even 1 day can make a difference

1 day off school each fortnight

=

Missing more than a year of learning over 12 years



Each day's learning builds on what has been learnt before

Good attendance begins in Prep



It's where good habits begin

### ATTEND ALL DAY, EVERY DAY



\*Based on historical data.

#### What parents can do

Promote the importance of school

Get to know the teacher

Go to school events

Read the school newsletter

Be organised at home

Supervise homework

Ask about your child's day

Volunteer to help at school

Get involved in your child's school

For more information

Go to the **Every day counts** website: <https://education.qld.gov.au/initiatives-and-strategies/initiatives/every-day-counts>

*Sue Cannon—Principal*

# Creative Generation

Theodore State School thank the following organisations for their very generous donations towards helping our students achieve their dreams of performing in the Department of Education State School Ensemble: Creative Generation 2022



**RD & VJ Bock  
- Bocks  
Engineering**



**Aeris**  
RESOURCES  
CRACOW OPERATIONS





# THEODORE STATE SCHOOL

## Curriculum

INFORMATION AND TIPS TO  
SUPPORT PARENTS AND  
STUDENTS

### GEOGRAPHY QUESTIONS

Answer the following using sources other than the internet.

Name an Australian city that ends with 'G'

Which capital city has the longest name?



Christmas Island is off the coast of which mainland state?

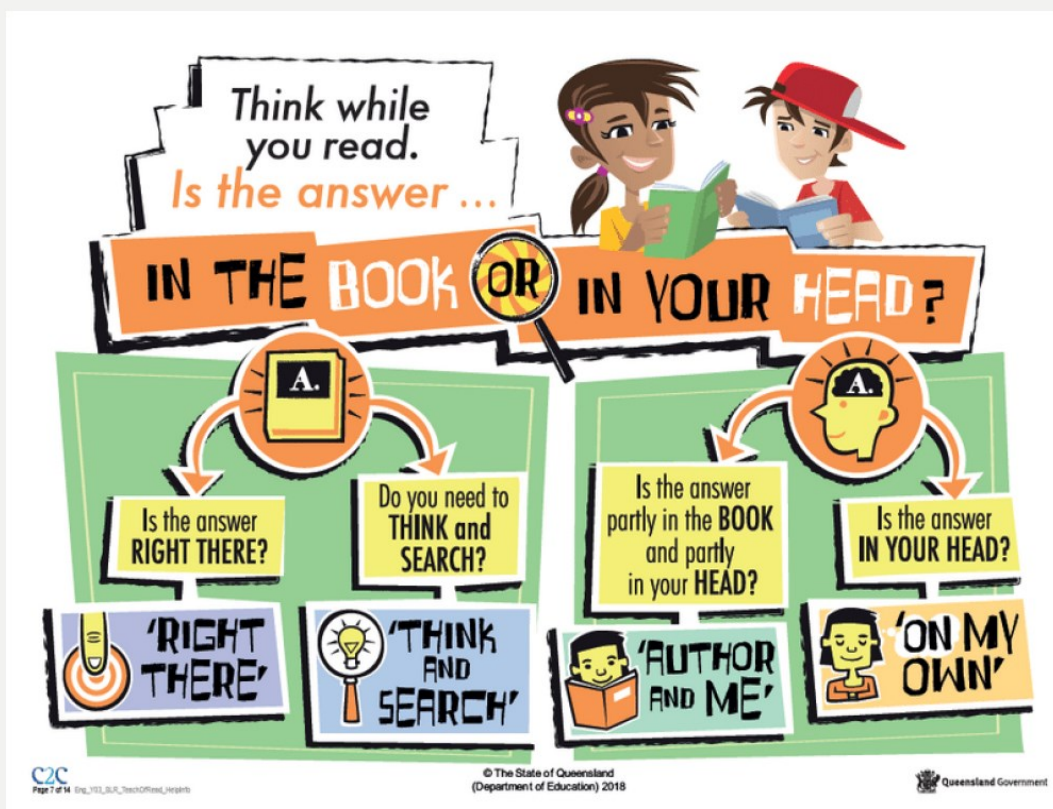
### QAR - Question-Answer Relationship

The question-answer relationship strategy develops reading comprehension skills by showing students the relationship between questions about the text and the answers. If students understand the type of question, they will know where to look for answers.

The strategy outlines where information to answer questions about a text can be found — 'In the book' or 'In your head'.

- 'In the book' questions ('Right there' and 'Think and search') are those where answers are found in the book. These are literal questions and answers.
- 'In your head' questions ('Author and me' and 'On my own') are those where answers are developed from the reader's own ideas and experiences. They are not directly found in the book. These are inferential questions and answers.

QAR is a fantastic tool to draw upon when reading at home across all year levels. The graphic below is a great visual prompt and the tables on the following page show simple ways to structure questions so that all four levels of questioning are targeted.





# QAR - Question Answer Relationship continued



## QAR guide

### In the text

#### Right there

The answer to this type of question can be found right there in a sentence in the book. Often words from the question are in one sentence of the text containing the answer. Answers are usually one word or a short phrase.

#### Types of questions

Who is ...?

Where is ...?

What is ...?

When is ...?

How many ...?

When did ...?

#### How to find the answer

Re-read the text.

Scan the text.

Look for key words in the text.

#### Think and search

The answer to this type of question is found in several parts of the text and from several pieces of information. A short section of the text might have to be read and the main idea identified. A 'main idea' type of question is harder than a 'look for different pieces of information' but the answer is still in the book. Answers are usually short.

#### Types of questions

For what reason ...?

How did ...?

Why was ...?

What caused ...?

What language ...?

What happens when ...?

#### How to find the answer

Re-read or skim the text.

Look for important related information.

Summarise a part of the text.

## QAR guide

### In your head

#### Author and you

The answer is not directly in the text. The answer comes from fitting together clues from the text and from the reader's prior knowledge. This type of question is often about making a judgment, considering things from someone else's perspective or making comparisons with other stories. Answers can be longer and involve making inferences or predictions that aren't stated clearly in the text.

#### Types of questions

Would you ...?

Who do you think ...?

Do you agree with ...?

What did you think of ...?

What is the purpose of ...?

Whose point of view ...?

How are ... similar/different ...?

What do you think will happen next?

What qualities of character does ... demonstrate when ...?

What do you think the author was trying to say?

#### How to find the answer

Re-read the text.

Think about what you already know and what the author says.

Predict the author's intent.

#### On my own

The answer is not in the text. The answers come from the reader's prior knowledge, and their own ideas and experience. Answers can be longer and require readers to make some type of judgment. They are highly personal and vary greatly from reader to reader.

#### Types of questions

Do you know ...?

Have you ever ...?

Would you ever ...?

Why do you think ...?

How do you think ...?

What would you ...?

How do you feel about ...?

How does ... compare with ...?

Why did you choose ...?

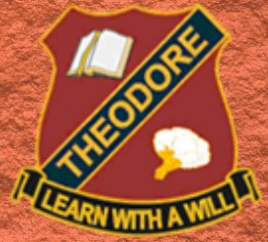
What do I already know about ...?

#### How to find the answer

Think about what you already know.

Make connections with what you have read before and what you already know.





# Theodore NAIDOC 2022

Wednesday 27th July



Everyone  
Welcome

March from the  
school at 1pm



Sausage Sizzle at the  
surgery at 1.30pm





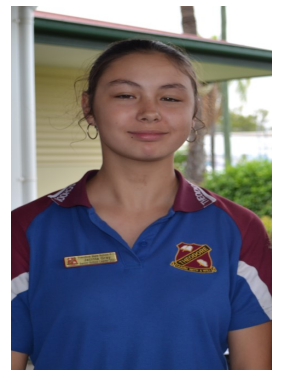
# Leadership Induction Ceremony

On Friday 6th May Theodore State School held an induction ceremony for the 2022 Student Council. This event saw several prominent members of the Theodore community attend the ceremony to give the schools new leaders their badges and certificates as well as attend a morning to honour the new leaders. For those who could not attend allow us to introduce the student leaders of 2022.



## Senior School Captain: Jacinta Gray

*Jacinta's role within the student body is to represent the school at public events including ceremonies and P&C meetings. Jacinta is a well-rounded student with great communication skills and is a great role-model for younger students.*



## Junior School Captains

*The role of junior school captain is to support the senior school captain as well as be a positive role model in the primary school.*

Phoebe Church is a student that always works hard and encourages other students to try their hardest.



Archer McClelland is an avid swimmer and keen learner who leads by example by always giving everything a go.



## Sport Captains

*Sport Captains play an important role in keeping school spirit high for both Dawson and Castle. They cheer on students at sporting events, co-ordinate practice days and healthy activities at lunchtime and before school. They help Theodore State School be an active and healthy student body that is ready to compete in a broad range of sports with our neighbouring schools.*



### Senior Dawson Captain

**Summer Church** is a competitive student who always strives to get her team over the finish line by encouraging Dawson athletes throughout her time at school.

### Junior Dawson Captain

**Liam Hassall** is a quiet achiever who leads Dawson with enthusiasm. Liam always helps ensure sporting events run smoothly and everyone has fun.

### Senior Castle Captain

**Noah Cluff** is always willing to lend a helping hand to pack up and clean up sporting events as well as encourage his fellow Castle athletes.

### Junior Castle Captain

**Isabella Domin** is passionate about helping other students succeed and is always finding ways to improve and reach her goals while motivating her fellow classmates.







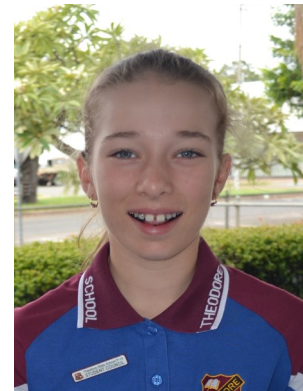
**Kathleen Jones** is in Grade 8 and has been voted to represent the upper school. Kathleen is a quiet industrious student who believes in a fair chance for all and is keen to help wherever she can.

**Maia Shoecraft** is in Grade 5 and is the junior school representative. Maia is an enthusiastic learner and leader who is always excited for new challenges and opportunities to help her fellow students.



## Student Representatives

*Student representatives complete the student council. Their role is to represent all years levels with students from Grades 5-10 representing the interests of the student body as a whole. They are a direct link between the student body and the student council who interact with students of all ages in order to listen to concerns and find ways of improving student life. They are a helping hand, a kind voice, a student to look up to and a friend to all.*



**Storm Kirby, Charlie Sutherland and Addison Hartwig** are in Grade 7 and represent the middle and high schools. Storm is an outgoing member of the school community who is always ready to talk to students about their concerns for the school. Charlie is a keen and kind student who is always seeking equal opportunities and fair conditions for the Theodore State School community. Addison is a quiet leader and an excellent problem-solver who endeavours to help those around her in an inclusive and co-operative manner.



# IMPORTANT DATES 2022

## MAY

**27** Secondary Sport Exchange - Baralaba SS

**30** Year 5/6 Stem Program - Moura SS

## JUNE

**1** QMEA - STEM/Tradies for a Day - Secondary Students

**2** P&C Meeting - 5pm

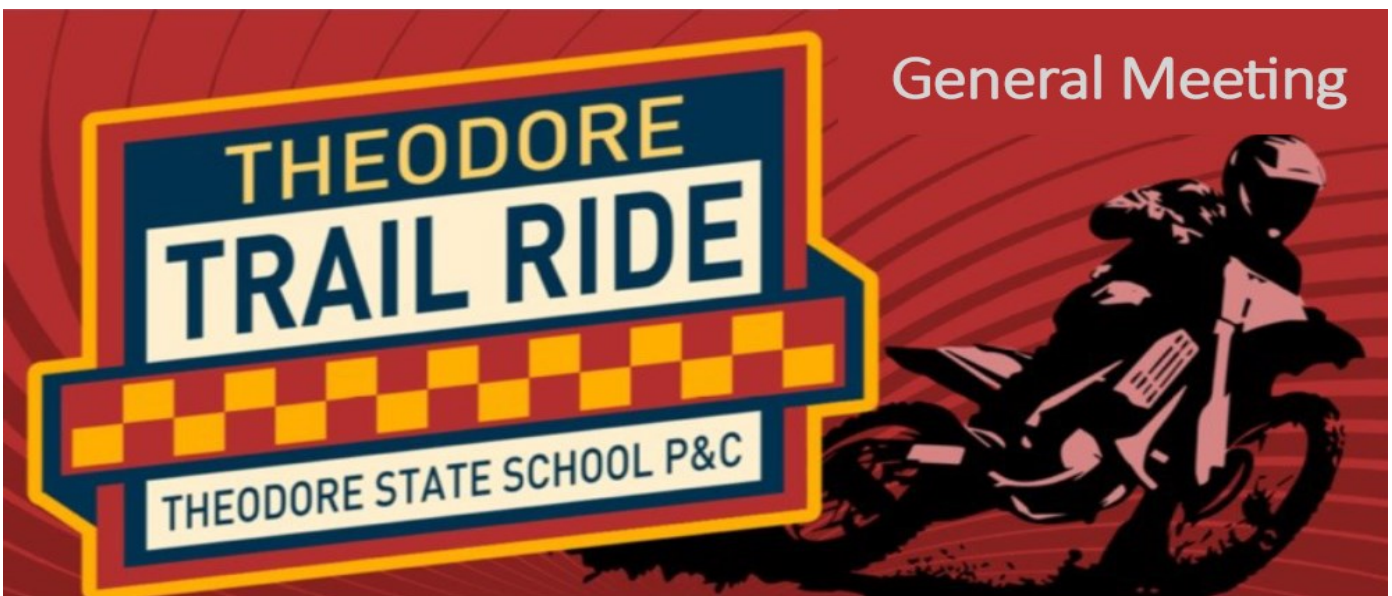
**6-8** Life Education virtual lessons

**7** Year 4 Rockhampton Excursion - FBA Flow Centre/Rockhampton Zoo

**9** Year 3-10 Half Day Athletics Carnival

**10** Prep-Year10 full Day Athletics Carnival

**20** School Performance Tour - 'Ghana Beat My Drum'



Come along to our General Meeting and help support this great community event. **EVERYONE** welcome.

Monday, 6<sup>th</sup> June at 6pm at The Theodore Hotel.



# Awards - Week 4

# T3 TUESDAY



**Jack, Casey, Jacinta, Leo**

## PRINCIPAL'S COMMENDATIONS



**Back Row: Alan, William, Hunter, Georgie, Pippa, Xavier, Vince, Claire**

**Front Row: Toby, Grace, Maddie**



# Awards - Week 5

T3 TUESDAY

## PRINCIPAL'S COMMENDATIONS



Back Row: Phoebe, Dailen, Ethan, Kathleen, Tobey, Liam

Front Row: Munro, George, Norman, Archer



## PRINCIPAL'S COMMENDATIONS



Back Row: Jack, Mac, Ayla, Lochlan, Ella, Tessa  
Front Row: Isabelle, Lola, Austin

## LEXIA



Robert, Jack, Stella-May, Molly, Amelia





# Theodore State School Playgroup

Every Thursday morning during the school term  
for any 0-5 year old children.

Time: 9:00am to 11:00am

Where: playground near prep building

Parking: street parking available in Sixth Ave

All are welcome!

Children must be accompanied by an adult during the  
session.

Please bring a hat, healthy snack for morning tea, water  
bottle and enclosed shoes.

For more information on our playgroup please contact the  
school at 49903333 or Bec Trewick at [rtrew5@eq.edu.au](mailto:rtrew5@eq.edu.au)





# THEODORE STATE SCHOOL

## *Creative Generations*

### *Raffle*



**\$2 per ticket**



Electrical cooking items up for grabs.



Slow cooker and  
recipe mix pack



Donated by  
Theodore Post Office



Sausage roll  
and Pie Maker  
with cookbook



Pancake maker  
breakfast pack



**Drawn 7th June**

Tickets available at:  
Xtreme 1 Servo,  
Theodore Pharmacy,  
Theodore Post and  
Theodore Home and  
Garden

Funds go towards helping  
our students perform in  
Brisbane in July.



# THEODORE Community NEWS

*Theodore State School acknowledges the continued community support received, which embodies the spirit of Theodore.*

## 2022 CENTENARY CELEBRATIONS

THEODORE  
Chamber of  
Commerce

In 1922 a visit from Governor Nathan and Premier Theodore was the start of an irrigation scheme in Theodore.

This celebration recreates that historical event as well as telling local stories from way back when...

### MAY 28TH 2022

#### • CAR DISPLAY 10am to 2pm



- Presented by members of the All Classic Motor Club of CQ

#### • PRODUCTION 11am (Re-enactment with local talent)

- Featuring local people role playing the visit of the 1922 politicians who came in their vintage cars to picnic on the banks of the Dawson River. They came to declare it a site for the town and to meet the local graziers
- Includes talent from the School Choir.
- Feat. interesting insights into the 1920s on the Dawson

#### • LUNCH 1PM

- Bring your own for a 'Picnic in the Park' and have lunch with the Dawson movers and shakers of 1922 (Sandwiches, tea and damper for sale)

#### • MUSEUM (After Lunch)

- After lunch, visit the museum display showing life here before 1922

#### • AFTERNOON TEA from 2pm @ Bowls Club

~ Bar Open - Barefoot Bowls ~

#### • DINNER - available @ Hotel Theodore

#### • OLD TIME DANCE 7pm @ RSL Hall

- Mick & Kay's 'Purple Rush' taped music and some live talent too!
- Entry Fee \$5 which includes supper. Contributions such as a share plate appreciated but not compulsory.
- Raffle with proceeds for flood relief.



in case of wet  
weather, move  
to RSL Hall

100 YEARS

MORE INFO  
LORAIN  
0429 931 264  
LORAIN.HELLYER@BIGPOND.COM



# Employment Opportunity

## Hotel Theodore Board Secretary

The Hotel Theodore Co-operative Association Ltd is seeking an energetic, flexible and skilled person to fulfil the role as *Secretary to the Board of Directors* starting June 2022.

The Secretary to the Board of Directors reports to the Chairman of the Board and is required to work collaboratively (cooperatively) with the Board, the Hotel's Bookkeeper and the Management Team.

A Secretary to the Board of Directors plays an important role in supporting the effectiveness of the board by monitoring that board policy and procedures are followed and coordinating the timely completion and despatch of board agenda and briefing material.

### About the Role

- Preparation of agenda and board papers for the monthly Board meetings and the Annual General Meeting.
- Recording, maintaining and distributing the minutes of all Board, AGM and committee (if required) meetings.
- Recording the Resolutions of the Board and voting results and retaining them in a special register.
- Undertaking all Action activities from the Board meetings as identified by the Board.
- Ensuring all regulatory compliance activities and documentation are completed for the Incorporated Association.
- Assisting Hotel Management with the promotion of the Hotel through media, social media and local opportunities.
- Grant research and writing of grant applications on behalf of the Hotel.
- Incoming and Outgoing correspondence whether by mail, email or phone.
- Collating reports for the Board
- Prioritising workloads

### Essential Skills (To be addressed in application)

- Effective excellent oral and written communication skills
- A high level of competency with Microsoft Office – Word and Excel particularly.
- A high level of competency with Social Media
- A high level of diplomacy and confidentiality
- Sound knowledge of meeting procedures
- Ability to manage different priorities and tasks
- Grant writing experience an advantage and would be beneficial
- Ability to work independently as well as part of a team.
- Attention to detail
- Effective planning and implementation skills

This is a casual position with award conditions. Hours range between 4-8 hours per fortnight plus monthly evening Board meetings. Working hours may be flexible to suit the right applicant.

Please submit applications by email to [manager@hoteltheodore.com.au](mailto:manager@hoteltheodore.com.au) or in person to the reception at the Hotel. Application closing date is 31<sup>st</sup> May, 2022

## GETTING INVOLVED – BECOME A SHAREHOLDER TODAY!

The Hotel Theodore Co-Operative was established 73 years ago to give the district of Theodore a hotel in which the community was actively involved.

Every resident of Theodore and District (within 40kms of the Hotel) aged 18 year or over, is entitled to become a shareholder. Being a shareholder entitles you to attend and vote at the annual AGM, held in September each year and if desired, to run for election as one of seven Directors of the Co-Operative.

Share application forms are available from Hotel Reception and the purchase price of a share is **twenty-five cents (.25c)**. Alternatively contact Karen Smoothy on 0418 884 721 or [secretary@hoteltheodore.com.au](mailto:secretary@hoteltheodore.com.au) to arrange for a copy of the form to be sent to you.

*To be an active shareholder for this year's AGM,  
applications are due by 5.00pm 14<sup>th</sup> June, 2022*



To get involved or for more info, please contact Ridhi,  
[ridhi@integreatqld.org.au](mailto:ridhi@integreatqld.org.au) or 0469 034 547







# flourish

in Biloela 2022

A **community festival** facilitated by Integreat QLD

• Cultural Fashion Parade • Music and Performances •  
Art Exhibition • Photo Competition • International Food

**Saturday, 11th June 2022**

**Biloela Civic Centre - 96 Rainbow St, Biloela**

*(Due to COVID-19 we have moved the date of the event from the 26th March to 11th June at the Biloela Civic Centre.)*

For more info, please contact Ridhi, [ridhi@integreatqld.org.au](mailto:ridhi@integreatqld.org.au) or 0469 034 547